

- **Enhancement of soft tissue by MCAT (modified coronally advanced tunnel) technique in combination with hyaluronic acid (hyaDENT BG) and naturally cross-linked collagen membrane (smartbrane)**

Усиление мягких тканей с помощью метода MCAT (модифицированный коронарный туннель) в сочетании с гиалуроновой кислотой («Hyadent-BG») и коллагеновой мембраной «Smartbrane», с естественной поперечно-сшитой структурой

- **Baseline**



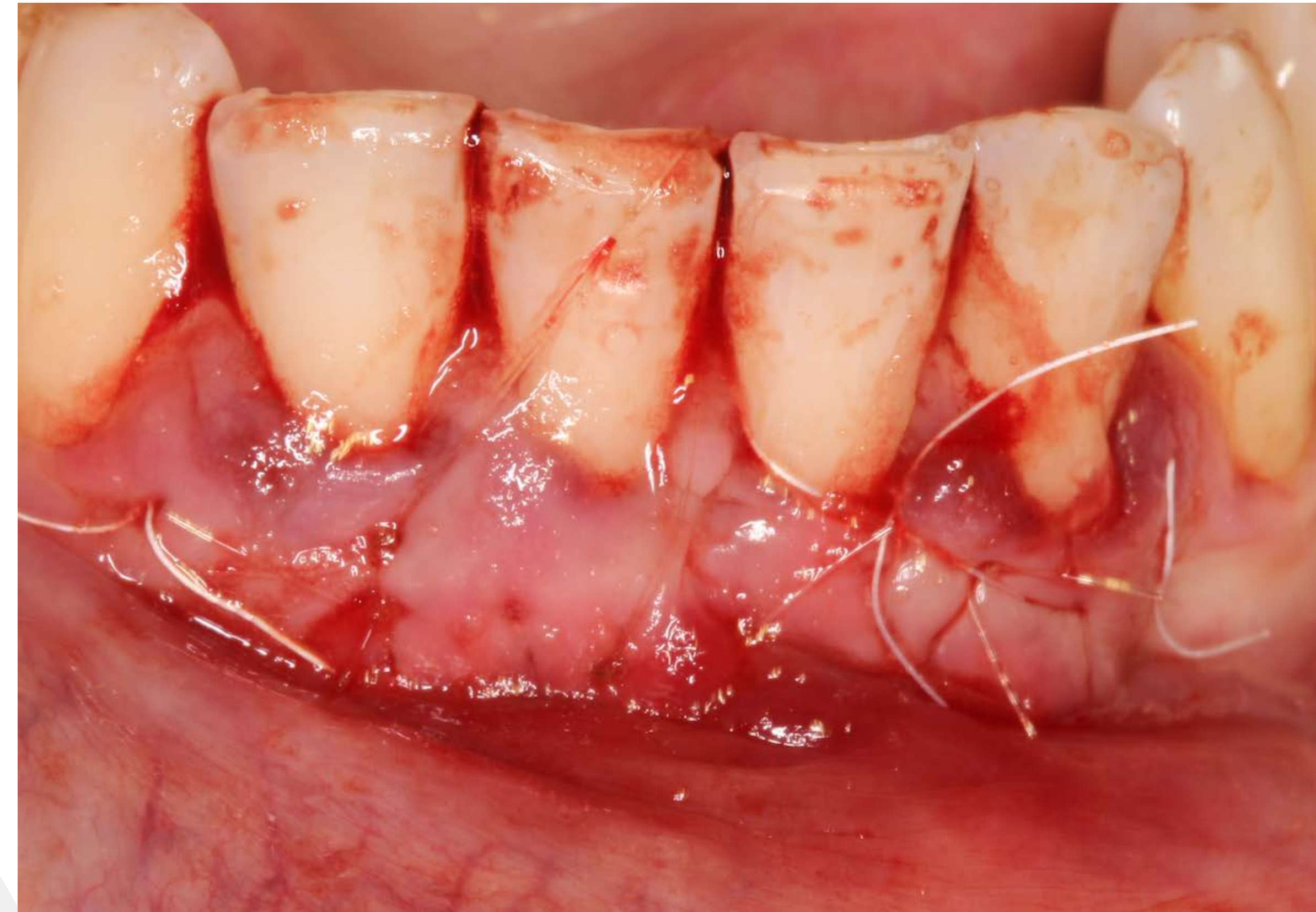
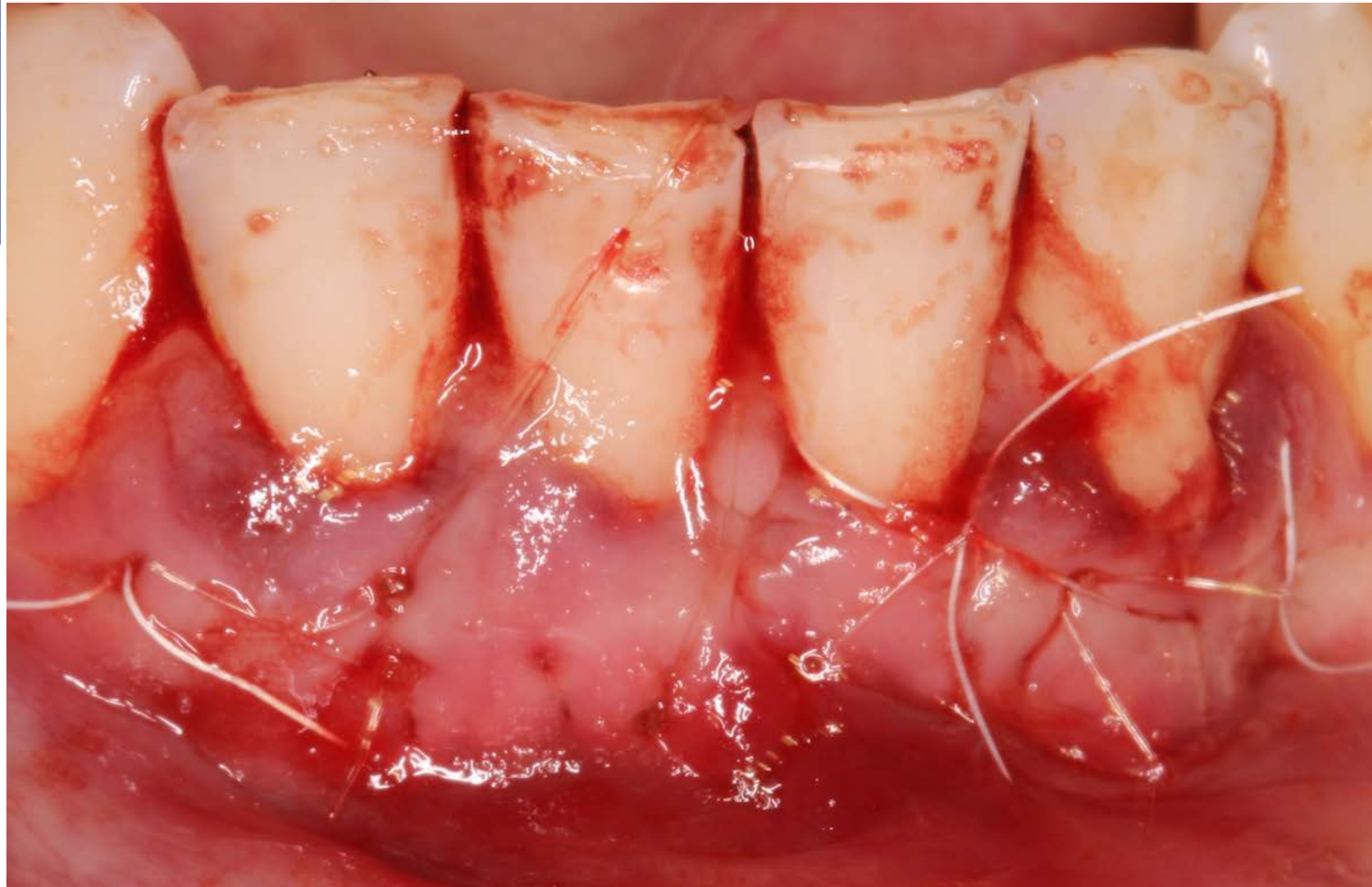
- **Modified tunnel preparation**
- **Smartbrane (30 x 40 mm) (Regedent, Dettelbach Germany)**



- **Placement of the folded Smartbrane inside the tunnel with the sliding PTFE suture**



- **Coronally advanced tunnel with the Smartbrane inside**
- **Suturing of the folded Smartbrane with 4.0 PTFE (BioTex, Regedent, Germany) and Monocryl 6.0 (Ethicon, HH, Germany)**



- **Follow up after 5 months of healing**

